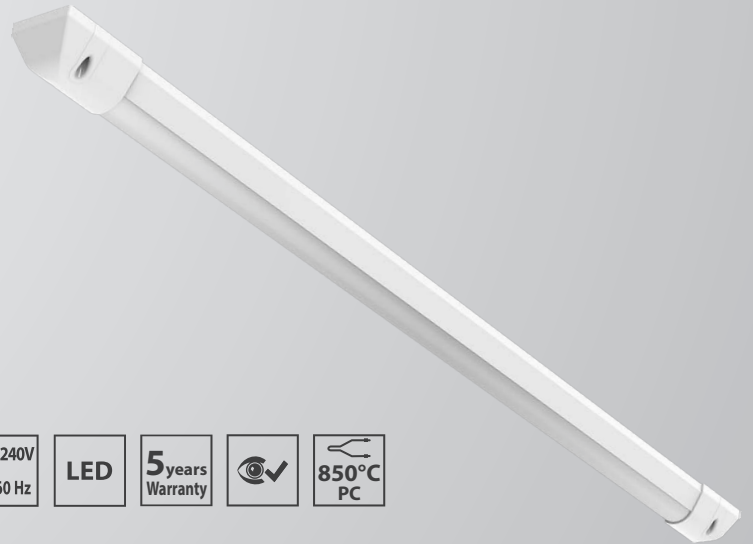


RAMBO-LED-FL

IP 66 / IP 67, IP 42



IP42
IK11 + 60J



Application: The dustproof RAMBO-LED luminaire with water jet-resistance is designed for environments with a high risk of damage, such as prison cells, psychiatric hospitals, subways and railways.

Ballast: EP – electronic 220-240 V / 50-60 Hz AC, 220-240V DC 0Hz

Light source: LED, 4000K, CRI +80, MacAdam3

Housing: White painted steel sheet (RAL 9016) equipped with plastic end caps (polycarbonate)

Diffuser: Tube of 70 mm external diameter and 4 mm wall thickness made of opal polycarbonate, equipped with sealing plugs in case of IP66/IP67 version

Fastening: Surface wall or ceiling mounting

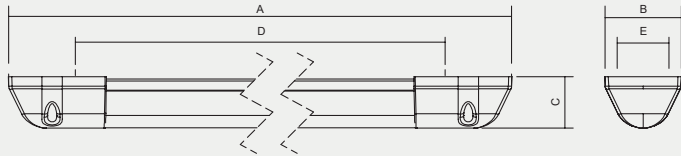
Connection: Screw connector terminal block, maximum diameter of wires 2.5 mm²

Standard equipment: 2 pcs cable gland, washers with rubber to seal mounting holes, safety screws (it is necessary to order additionally 002020 RAMBO special key for safety screws)

Calculated lifetime – LED modules:

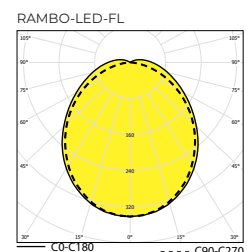
L80B10 ta30 – 70 000h

L70B10 ta30 – 100 000h



Order number	Name	Lighting fixture luminous flux (lm)	Lighting fixture luminous flux NL (lm)	Power input (W)	Rated power output (lm/W)	Ta max (°C)	Dimensions of lighting fixture A x B x C (mm)	Mounting spacing Dx E (mm)	Weight (kg)
IP66/IP67									
084085	RAMBO-LED-FL-2500-4K, IP66/IP67, l=955 mm	1929	-	17	113	30	955x112x76	779x60 (Ø8)	5,3
084086	RAMBO-LED-FL-5000-4K, IP66/IP67, l=1445 mm	3858	-	33	117	30	1445x112x76	1276x60 (Ø8)	7,5
084087	RAMBO-LED-FL-7500-4K, IP66/IP67, l=1910 mm	5787	-	50	116	30	1910x112x76	1742x60 (Ø8)	8,8
IP66/IP67 - NL (version with night light)									
084262	RAMBO-LED-FL-NL-2500-4K, IP66/IP67, l=1020 mm	1929	455	17	113	50	1020x112x76	844x60 (Ø8)	6,3
084263	RAMBO-LED-FL-NL-5000-4K, IP66/IP67, l=1510 mm	3858	455	33	117	40	1510x112x76	1342x60 (Ø8)	8,3
IP42									
084220	RAMBO-LED-FL-2500-4K, IP42, l=955 mm	1929	-	17	113	30	955x112x76	779x60 (Ø8)	5,3
084221	RAMBO-LED-FL-5000-4K, IP42, l=1445 mm	3858	-	33	117	30	1445x112x76	1276x60 (Ø8)	7,5
084222	RAMBO-LED-FL-7500-4K, IP42, l=1910 mm	5787	-	50	116	30	1910x112x76	1742x60 (Ø8)	8,8
IP42 - NL (version with night light)									
084260	RAMBO-LED-FL-NL-2500-4K, IP42, l=1020 mm	1929	455	17	113	50	1020x112x76	844x60 (Ø8)	6,3
084261	RAMBO-LED-FL-NL-5000-4K, IP42, l=1510 mm	3858	455	33	117	40	1510x112x76	1342x60 (Ø8)	8,3

Tolerance of luminous flux and power input of the lighting fixture +/- 10%



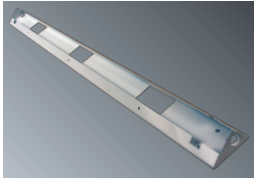
Accessories on request



004569 Screw with special head

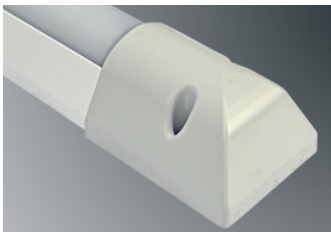


002020 Spanner for mounting and dismantling special screw



order number on request
Corner bracket 30°

Lighting fixture detail



On request

Em – non-maintained emergency lighting (1h, 3h)

DIM – dimmable electronic ballast (DSI, DALI)

2.7K-6.5K – colour temperature

NEREZ - housing produced from stainless steel AISI 304 or AISI 316 (in case of STAINLESS STEEL version its declared for ambient temperature decreased about 5-10°C)

MW SENSOR - microwave sensor (in case of requirement for sensor contact the technical support)

NL - night light

II - insulation class II

MULTI – maintained emergency lighting (1h, 3h)

RAL – other colour scale

1/3 F – single-phase or three phase through wiring connection, maximum diameter of wires 2.5 mm²

Standard order number	EM-1,5H	EM-3H	MULTI-1,5H	MULTI-3H	DALI	1F	3F
IP66/IP67							
084085	X	X	084060	084063	084066	084085 1F	084085 3F
084262	X	X	X	X	X	084262 1F	084262 3F
084086	X	X	084061	084064	084067	084086 1F	084086 3F
084263	X	X	X	X	X	084263 1F	084263 3F
084087	X	X	084062	084065	084068	084087 1F	084087 3F
IP42							
084220	X	X	084223	084226	084229	084220 1F	084220 3F
084260	X	X	X	X	X	084260 1F	084260 3F
084221	X	X	084224	084227	084230	084221 1F	084221 3F
084261	X	X	X	X	X	084261 1F	084261 3F
084222	X	X	084225	084228	084231	084222 1F	084222 3F