

HOUND/3-MAG-LED

IP 65



Application: Recessed lighting fixture HOUND/3-MAG-LED is primarily designed for clean rooms. Thanks to frameless structure of the diffuser without screws and with clean design for easy maintenance, it is designed for clean rooms with required higher IP degree of protection, such as hospitals, laboratories.

Ballast: EP – electronic 220-240 V/ 50-60 Hz AC, 220-240 V DC 0Hz

Light source: LED, 4000K, CRI +80, MacAdam3

Housing: White painted steel sheet RAL 9016

Diffuser: GLM – matt hardened safety glass

Fastening: Mounting to ceiling modules 600 and to plasterboard by means of special set of brackets for plasterboard (not a part of the lighting fixture). Minimum height of false ceiling void is 200 mm.

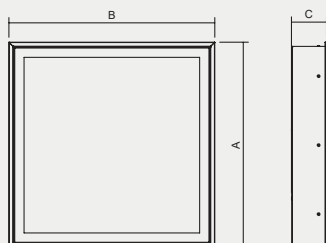
Connection: Screwless terminal block for easy mounting, maximum diameter of wires 2.5 mm². The lighting fixture is prepared for loop-in (possibility of connection of two cables)

Standard equipment: Rubber plug M20 for diameter of cable 7-12 mm

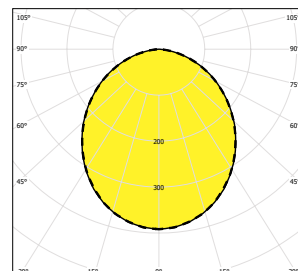
Calculated lifetime – LED modules:

L80B10 ta30 – 70 000h

L70B10 ta30 – 100 000h)

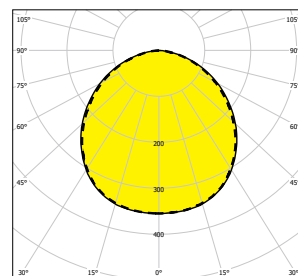


HOUND/3-MAG-LED-GLM



— C0-C180 - - - - C90-C270

HOUND/3-MAG-LED-SQ-GLM

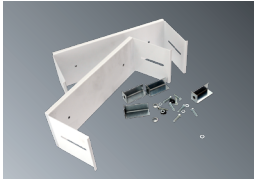


— C0-C180 - - - - C90-C270

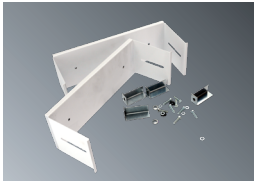
Order number	Name	Lighting fixture luminous flux (lm)	Power input (W)	Rated power output (lm/W)	Ta max (°C)	Dimensions of lighting fixture A x B x C (mm)	Mounting hole (mm)	Weight (kg)
4000K								
059767	HOUND/3-MAG-LED-SQ-GLM-5100-4K	4481	31	145	30	596x596x100	586x586	9
059768	HOUND/3-MAG-LED-SQ-GLM-6100-4K	4929	35	141	30	596x596x100	586x586	9
059769	HOUND/3-MAG-LED-SQ-GLM-7100-4K	7012	47	149	30	596x596x100	586x586	9
3000K								
059797	HOUND/3-MAG-LED-SQ-GLM-5100-3K	4320	31	139	30	596x596x100	586x586	9
059798	HOUND/3-MAG-LED-SQ-GLM-6100-3K	5190	37	140	30	596x596x100	586x586	9
059799	HOUND/3-MAG-LED-SQ-GLM-7100-3K	6496	47	138	30	596x596x100	586x586	9

Tolerance of luminous flux and power input of the lighting fixture +/- 10%

Accessories on request



051143 Set of brackets for plasterboard HOOVER3/HOUND3-LED



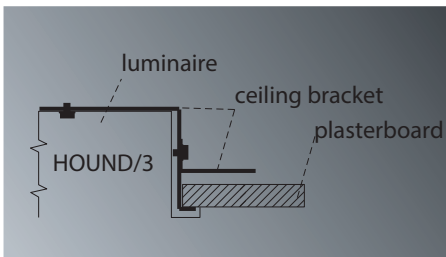
051199 Set of brackets for plasterboard HOOVER3/HOUND3-LED-SQ



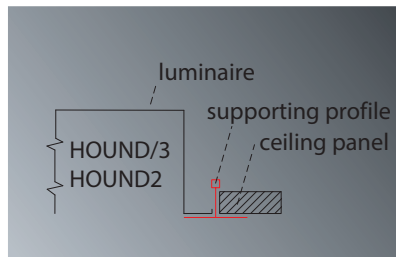
002021 Suction cup for glass opening HOUND4-MAG

Lighting fixture detail

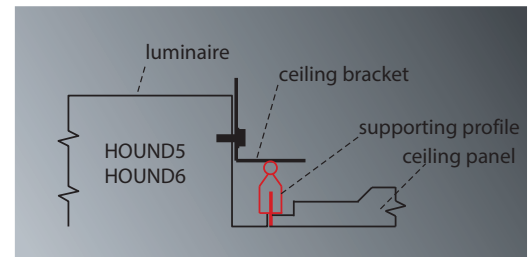
HOUND/3



HOUND/3, HOUND2



HOUND5, HOUND6



On request

Em – non-maintained emergency lighting (1h, 3h)

MULTI – maintained emergency lighting (1h, 3h)

DIM – dimmable electronic ballast (DSI, DALI)

RAL – other colour scale

2.7K-6.5K – various colour temperatures

GESIS – possibility to equip lighting fixtures with connectors

HOUND2 - version for false ceiling M625

HOUND5 - version for false ceiling M598

HOUND6 - version for metal ceiling M623

ATYP FALSE-CEILING - in case of other false-ceiling, please, contact the technical support

CRI - colour rendering index > 90

Stadard order number	EM-1H	EM-3H	MULTI-1H	MULTI-3H	DALI	1F	3F
4000K							
059767	X	X	059767 1H	059767 3H	059767 DALI	X	X
059768	X	X	059768 1H	059768 3H	059768 DALI	X	X
059769	X	X	059769 1H	059769 3H	059769 DALI	X	X
3000K							
059797	X	X	059797 1H	059797 3H	059797 DALI	X	X
059798	X	X	059798 1H	059798 3H	059798 DALI	X	X
059799	X	X	059799 1H	059799 3H	059799 DALI	X	X