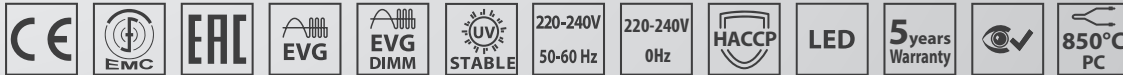
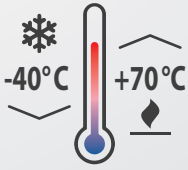
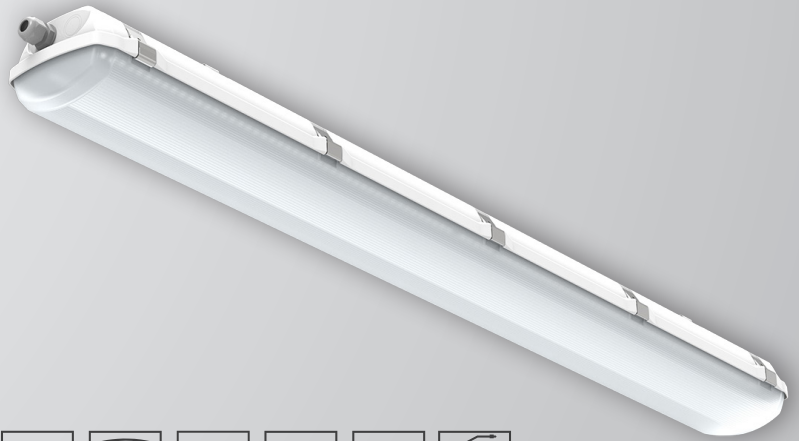


EXTRA-LED-PLUS/FROST

IP 66



Application: Dustproof lighting fixture of new generation EXTRA-LED-PLUS/FROST with splash water resistance is designed for workshops, warehouses, production areas and garages with higher ambient temperature.

Ballast: EP – electronic 220-240 V/50-60 Hz AC, 220-240 V DC

Light source: LED, 4000K, CRI +80, MacAdam3

Housing: Plastic material PC (polycarbonate), grey colour RAL 7035

Diffuser: PC (polycarbonate), opal

Fastening: Surface ceiling or wall mounting by means of two self-locking fastening brackets (standard equipment) or set of wall brackets - angle 45°, pole mounting via set of pole brackets, suspension by means of wire or cable suspenders.

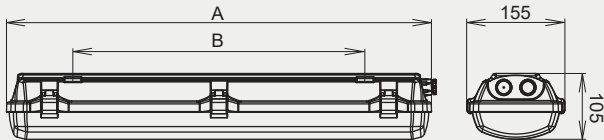
Connection: Screwless three-pole terminal block, maximum diameter of wires 2.5 mm².

Standard equipment: Cable gland M20 for diameter of cable 7-12mm and fastening brackets for direct fastening of lighting fixtures to a mounting surface and stainless clips.

Calculated lifetime – LED modules:

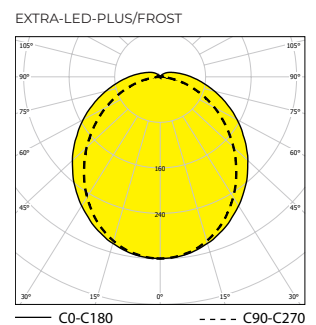
L80B10 Ta30 – 70 000h

L70B10 Ta30 – 100 000h



Order number	Name	Lighting fixture luminous flux (lm)	Power input (W)	Rated power output (lm/W)	Ta max (°C)	Dimensions of lighting fixture A (mm)	Mounting spacing B (mm)	Weight (kg)
054480	EXTRA-LED-PLUS/FROST-1R-5000-236-4K	4347	28	155	70	1280	880	3,18
054481	EXTRA-LED-PLUS/FROST-2R-10000-236-4K	8694	56	155	60	1280	880	3,30
054482	EXTRA-LED-PLUS/FROST-1R-4750-258-4K	4221	26	162	70	1580	1000	3,96
054483	EXTRA-LED-PLUS/FROST-1R-7500-258-4K	6776	43	158	65	1580	1000	3,70
054484	EXTRA-LED-PLUS/FROST-2R-12500-258-4K	10911	69	158	60	1580	1000	3,90

Tolerance of luminous flux and power input of the lighting fixture +/- 10%



Accessories on request



001696 Wire suspension EXTRA



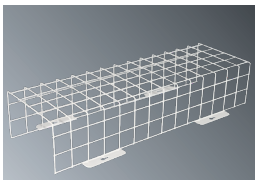
051131 Cable suspension-EXTRA-2x (3m)



064643 Set of wall brackets - angle 45° EXTRA, AISI304 (2 pcs)



051157 Pole bracket EXTRA (for Ø 50 mm), AISI304 (1 pc)



001748 LAK Protective cage EXTRA 18W

001749 LAK Protective cage EXTRA 36W

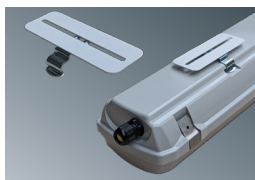
001750 LAK Protective cage EXTRA 58W



008006N Cable gland ESKV M20x1.5

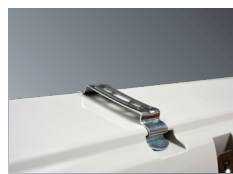
008088 Ventilation plug EVPS 20, grey RAL 7035

008097 Plastic nut WISKA EMUG 20 M20x1.5



065465 Adjustable fixing brackets EXTRA

Lighting fixture detail



On request

GESIS – possibility to equip lighting fixtures with connectors

1/3 F - single-phase or three phase through wiring connection, maximum diameter of wires 2.5 mm²

NUP - stainless fastening bracket

NSPP - stainless steel clip and fastening bracket

2.7K-6.5K - colour temperature

DIM – dimmable electronic ballast (DALI)

Standard order number	EM-1H	EM-3H	MULTI-1H	MULTI-3H	DALI	1F	3F
054480	X	X	X	X	054480 DALI	054480 1F	054480 3F
054481	X	X	X	X	054481 DALI	054481 1F	054481 3F
054482	X	X	X	X	054482 DALI	054482 1F	054482 3F
054483	X	X	X	X	054483 DALI	054483 1F	054483 3F
054484	X	X	X	X	054484 DALI	054484 1F	054484 3F